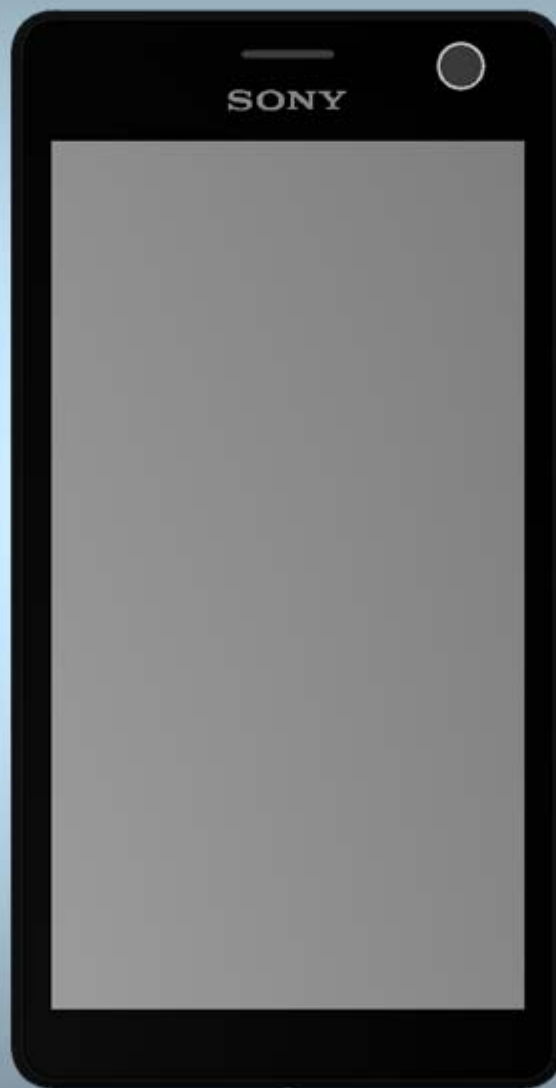


Component Replacement - electrical -



Xperia C4

E5303, E5306, E5333, E5343, E5353, E5363



CONTENTS

1 Replaceable Components 3

2 Component Placing..... 5

3 Additional Repair info 7

4 Revision History 13

For general information about electrical repair related issues, refer to 1220-1336: Generic Repair Manual - electrical

Baking prior to repair is required, if the board have been exposed to air more than 12 hours from PWB package opening. Too long exposure time increase the level of moisture in PWB and the PWB could delaminate during repair process and result in direct or latent failures and reduce reliability.

The boards shall be baked in 125°C ±5°C for 4 hours.

Test after electrical replacement: refer to 1273-1772 Mechanical Test Instruction

All Electrical components are RLC level B, Reversed Logistic Classification, See the Spare Part Handling chapter in Mechanical/Generic Repair Manual 1220-1333.

Do not remove shield can lids (Heat pasta are added and RF performance will be damaged)

1 Replaceable Components

EXPLANATION OF ABBREVIATIONS USED IN THE COLUMN 'COMMENTS' BELOW

COMPONENT LOCATION

P = Primary side

S = Secondary side

REPAIR METHOD

HA = Hot Air (removal & mounting)

ST = Soldering Tool (removal & mounting)

HA/ST = Hot Air for removal - Soldering Tool for mounting

BGA = BGA Station

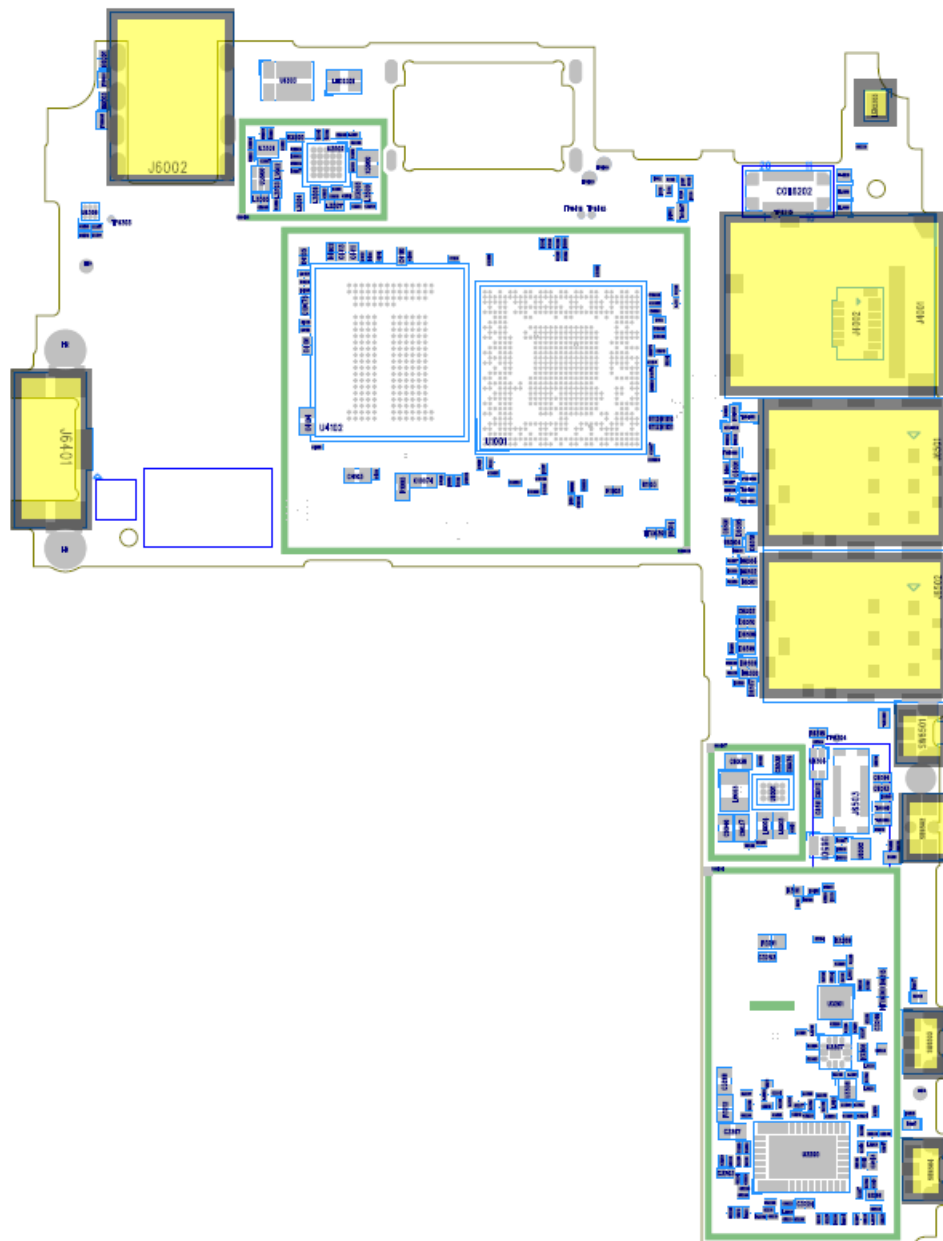
BH = Bottom Heater

ADDITIONAL INFORMATION

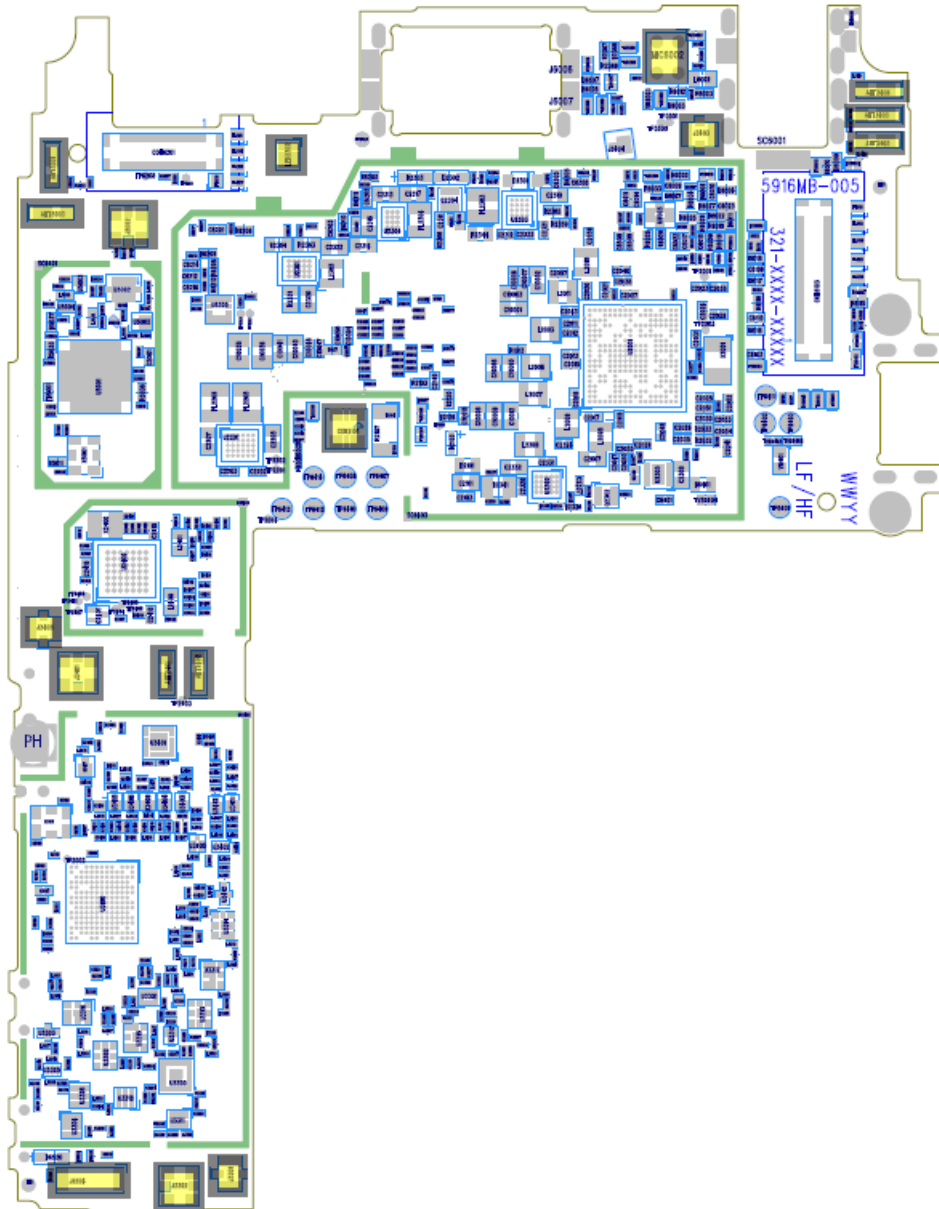
⇒1 (2,3,4, etc.) = Proceed to 'Additional Repair Info' for further instructions in the indicated section(s).

Position	Component	Part no.	Comments
ANT2401	Connector Leaf Spring Plug 1p Antenna	A/314-0000-00659	S HA+BH ⇨1
ANT2402	Connector Leaf Spring Plug 1p Antenna	A/314-0000-00659	S HA+BH ⇨1
ANT3403	Connector Leaf Spring Plug 1p Antenna	A/314-0000-00659	S HA+BH ⇨2
ANT3405	Connector Leaf Spring Plug 1p Antenna	A/314-0000-00659	S HA+BH ⇨2
ANT3406	Connector Leaf Spring Plug 1p Antenna	A/314-0000-00659	S HA+BH ⇨2
ANT5001	Connector Leaf Spring Plug 1p Antenna	A/314-0000-00659	S HA+BH ⇨3
ANT5003	Connector Leaf Spring Plug 1p Antenna	A/314-0000-00659	S HA+BH ⇨3
CON2101	BATTERY Connector	A/314-0000-00884	S HA+BH ⇨4
J3301	RF CONNECTOR WITH SWITCH _4 pin	A/314-0000-00933	S HA+BH ⇨5
J3302	Connector Coax Receptacle 1p test switch	A/314-0000-00282	S HA+BH ⇨6
J3401	Connector Coax Receptacle 1p test switch	A/314-0000-00282	S HA+BH ⇨7
J3403	RF CONNECTOR WITH SWITCH _4 pin	A/314-0000-00933	S HA+BH ⇨8
J3405	RF CONNECTOR WITH SWITCH _4 pin	A/314-0000-00933	S HA+BH ⇨9
J4001	MICRO SD CONNECTOR	A/314-0000-00930	P HA+BH or BGA ⇨10
J5002	Connector Coax Receptacle 1p test switch	A/314-0000-00282	S HA+BH ⇨11
J6002	EAR PHONE JACK CONNECTOR	A/314-0000-00925	P/S HA+BH or BGA ⇨12
J6401	MICRO USB CONNECTOR	A/314-0000-00936	P HA+BH or BGA ⇨13
J6501	SIM CARD CONNECTOR	A/314-0000-00926	P HA+BH or BGA ⇨14
J6502	SIM CARD CONNECTOR	A/314-0000-00926	P HA+BH or BGA ⇨15
J6504	WIRE TO BOARD CONNECTOR	A/314-0000-00927	S HA+BH ⇨16
LED2302	Flash LED	A/309-0000-00270	S HA+BH ⇨17
LED2303	LED Flash_350mA	A/309-0000-00271	P HA+BH ⇨18
MIC6002	Microphone	A/312-0000-00046	S HA+BH ⇨19
SW6501	Switch	A/315-0000-00085	P HA+BH ⇨20
SW6502	Switch Tact	A/315-0000-00084	P HA+BH ⇨21
SW6503	Input Switch	A/315-0000-00086	P HA+BH ⇨22
SW6504	Input Switch	A/315-0000-00086	P HA+BH ⇨23

Note: J6502 only valid for dual SIM products.



Primary side



Secondary side

3 Additional Repair info

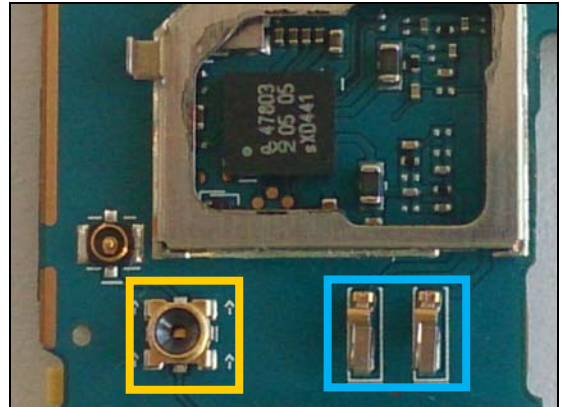
1

ANT2401, ANT2402

Replace if mechanical damaged.

(No or bad NFC)

Protect the RF connector with capton tape!



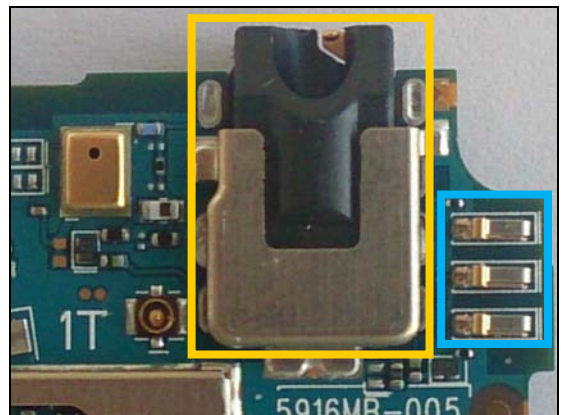
2

ANT3403, ANT3405, ANT3406

Replace if mechanical damaged.

(Bad network, diversity Rx antenna)

Protect the Jack connector with capton tape!



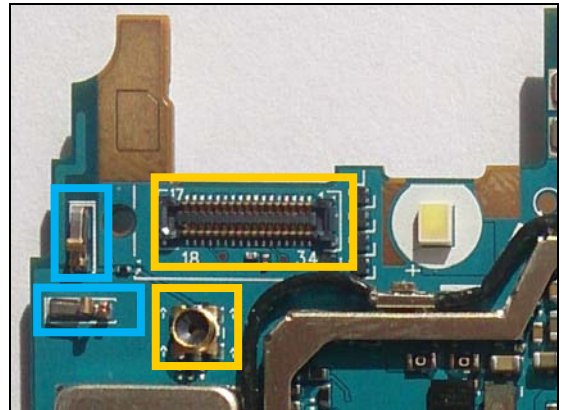
3

ANT5001, ANT5003

Replace if mechanical damaged.

(No or bad WLAN/ BT/ GPS)

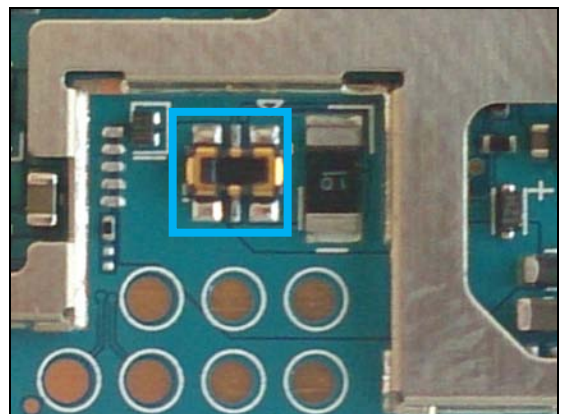
Protect the BtB and RF connectors with capton tape!



4

CON2101

Replace if mechanical damaged (Phone dead or power off)



Repair Actions: Additional Repair Info

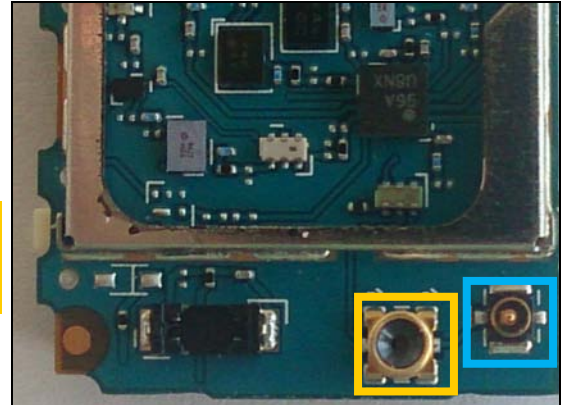
5

J3301

Replace if mechanical damaged

(Bad network, Main antenna)

Protect the RF connector with capton tape!



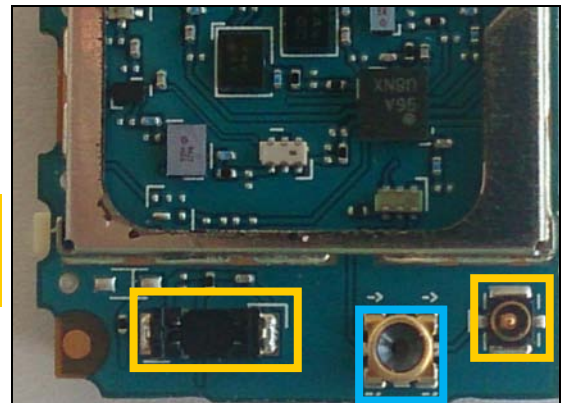
6

J3302

Replace if open circuit 1-2

(Bad network, Main antenna)

Protect the BtB and RF connectors with capton tape!



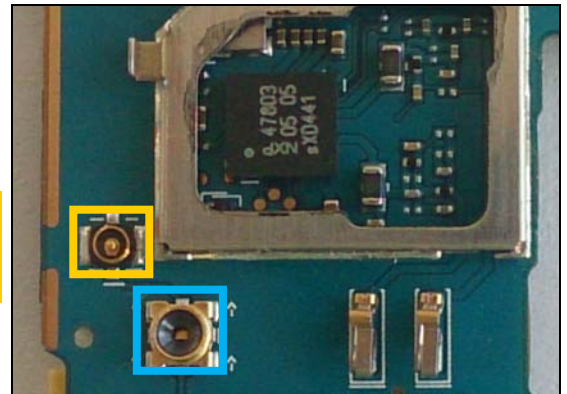
7

J3401

Replace if open circuit 1-2

(Bad network, diversity Rx antenna)

Protect the RF connector with capton tape!



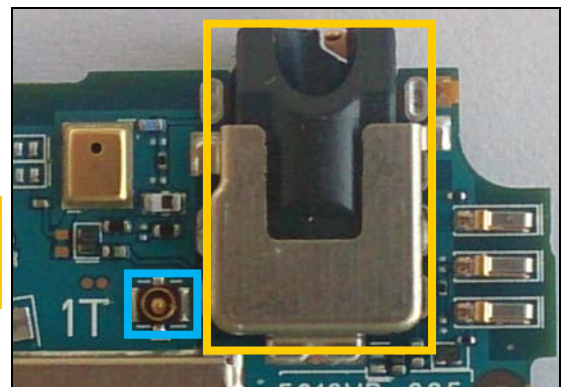
8

J3403

Replace if mechanical damaged.

(Bad network, diversity Rx antenna)

Protect the Jack connector with capton tape!

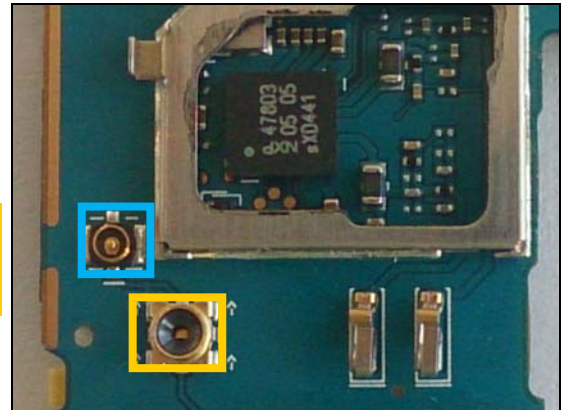


Repair Actions: Additional Repair Info

9

J3405

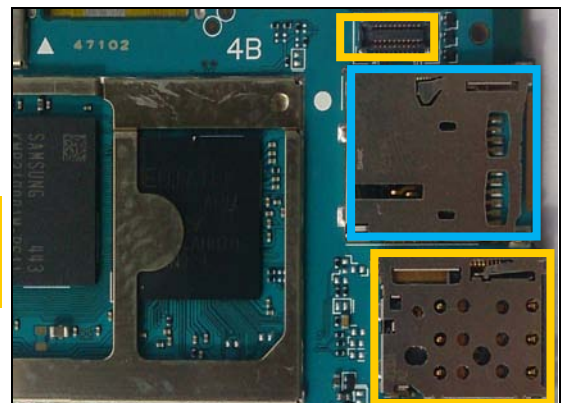
Replace if mechanical damaged.
(Bad network, diversity Rx antenna)
Protect the RF connector with capton tape!



10

J4001

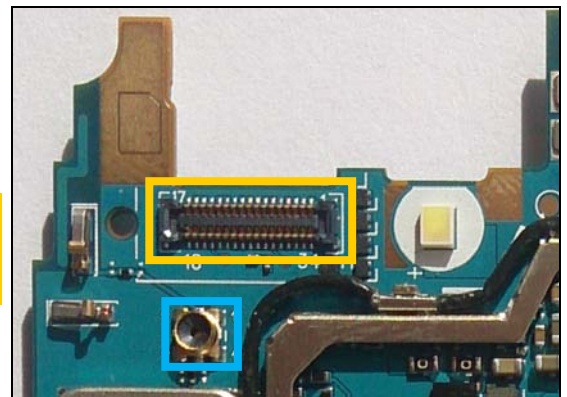
Replace if mechanical damaged.
(No SD card inserted)
Protect the BtB and SIM connectors with capton tape!



11

J5002

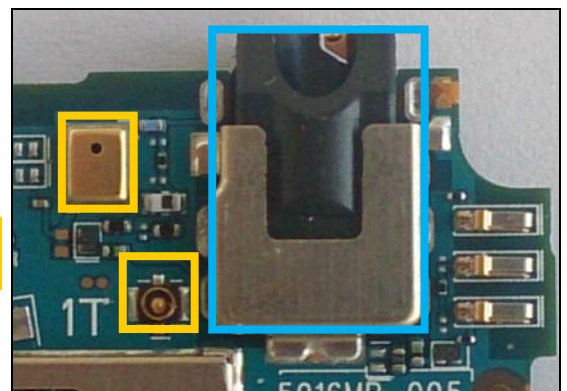
Replace if open circuit 1-2
(No or bad WLAN/ BT/ GPS)
Protect the BtB connector with capton tape!



12

J6002

Replace if no or bad audio to or from headset.
Protect the Rf connector and Mic with capton tape!

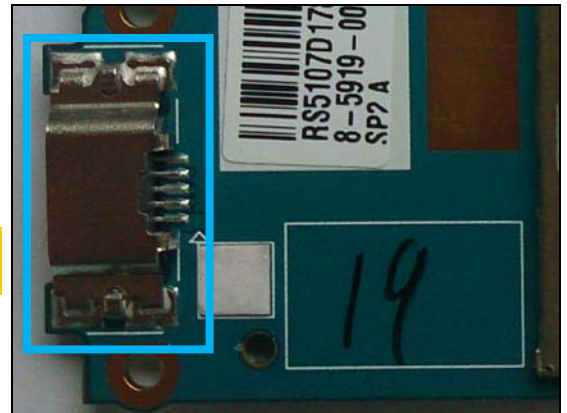


Repair Actions: Additional Repair Info

13

J6401

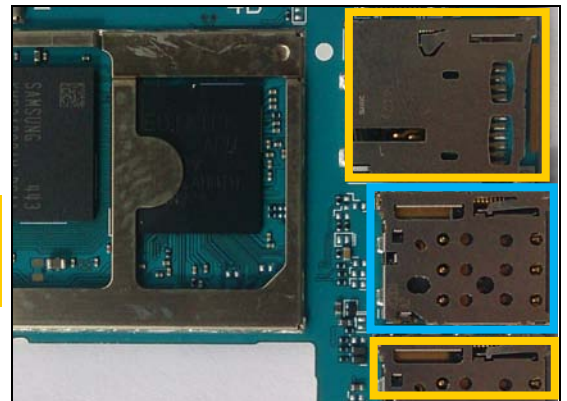
Replace if mechanical damaged (USB charger or data transfer not working)



14

J6501

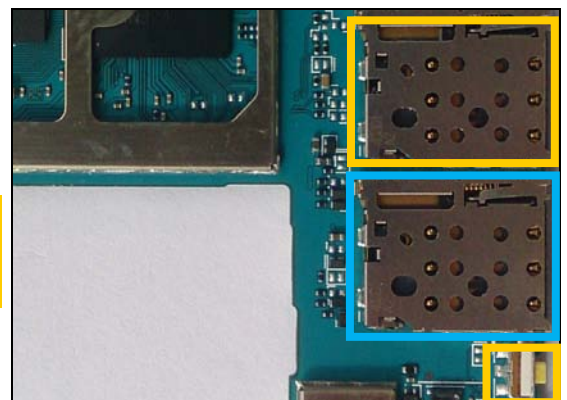
**Replace if mechanical damaged.
(No SIM 1 card inserted)
Protect the SD and SIM 2 (if mounted) with capton tape!**



15

J6502

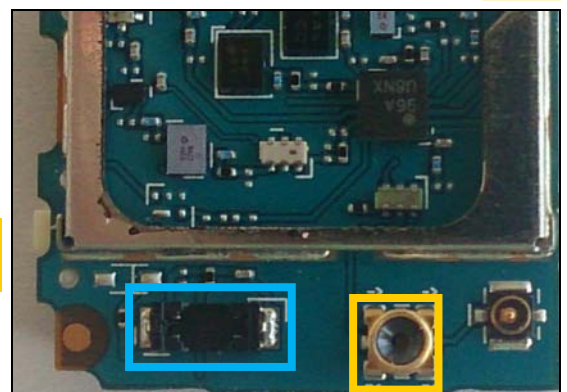
**Replace if mechanical damaged.
(No SIM 2 card inserted)
Protect the SIM 1 and Switch with capton tape!**



16

J6504

**Replace if mechanical damaged
(Vibrator not working)**

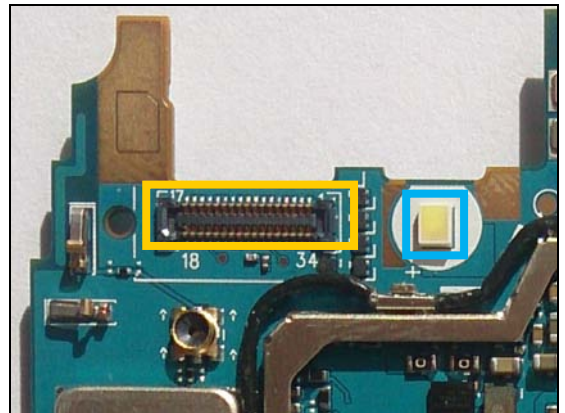


Repair Actions: Additional Repair Info

17

LED2302

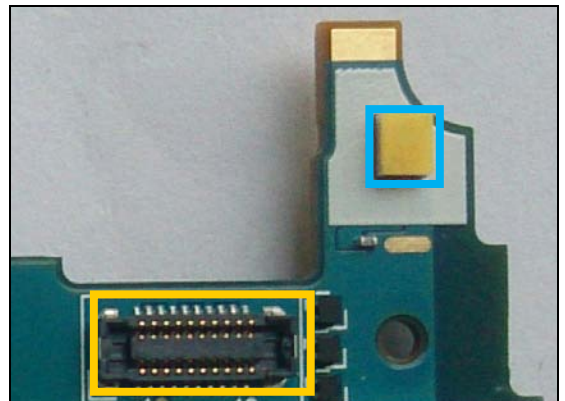
*Replace if Rear Flash LED not working.
Protect the BtB with capton tape!*



18

LED2303

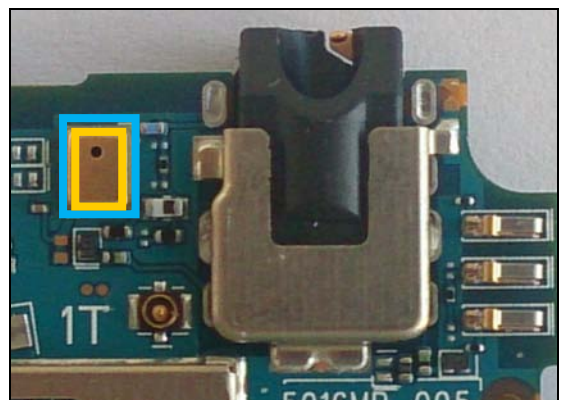
*Replace if Front Flash LED not working.
Protect the BtB with capton tape!*



19

MIC6002

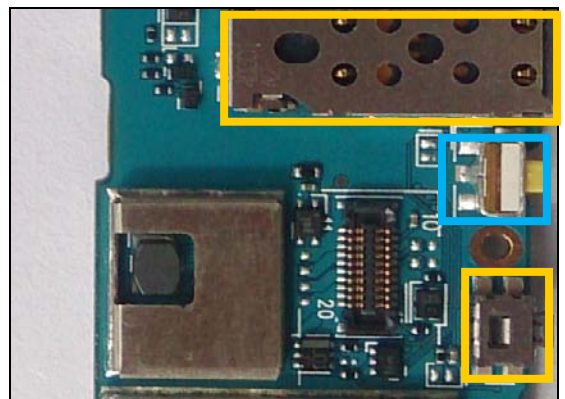
*Replace if no audio from secondary microphone.
When replacing protect secondary microphone with
capton tape!*



20

SW6501

*Replace if mechanical damaged or open circuit 1-2
when pushed.
(Reset not working)
Protect the SIM 2 (if mounted) and power Switch with
capton tape!*



Repair Actions: Additional Repair Info

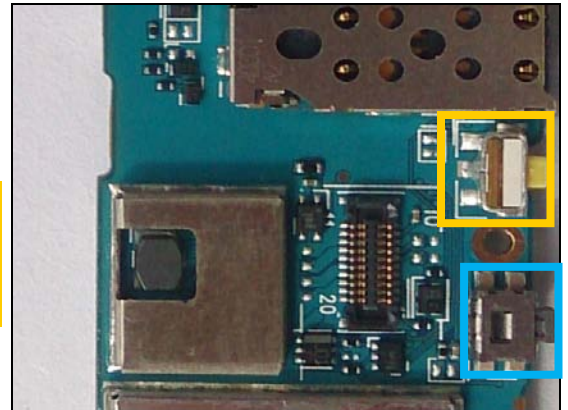
21

SW6502

Replace if mechanical damaged or open circuit 1-3 when pushed.

(Power on problems)

Protect the reset switch with capton tape!

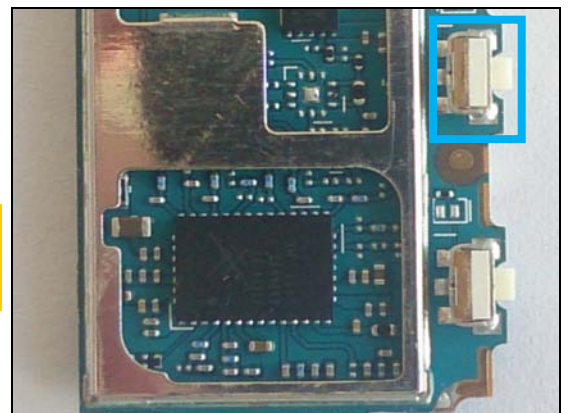


22

SW6503

Replace if mechanical damaged or open circuit 1-2 when pushed.

(Volume up problems)

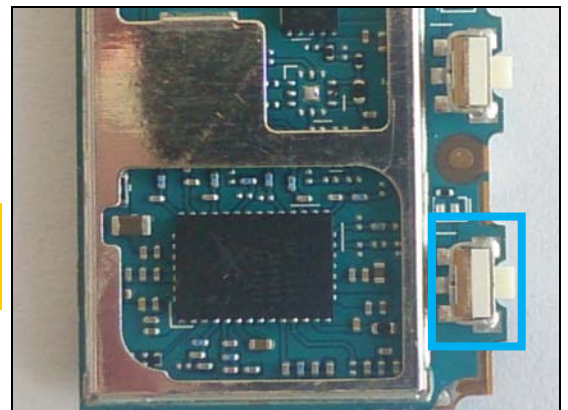


23

SW6504

Replace if mechanical damaged or open circuit 1-2 when pushed.

(Volume down problems)



4 Revision History

Rev.	Date	Changes / Comments
1	2015-05-18	Initial release